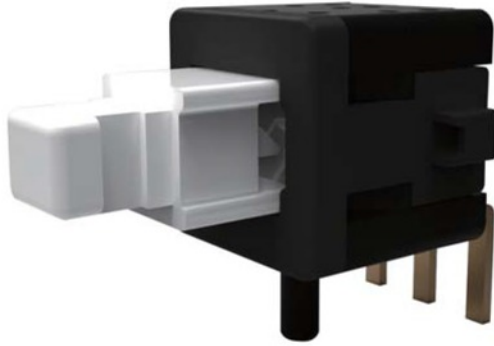


PS020 Series

Push button switches



Feature -

small size push switch (6x6 mm)
lock / non-lock function

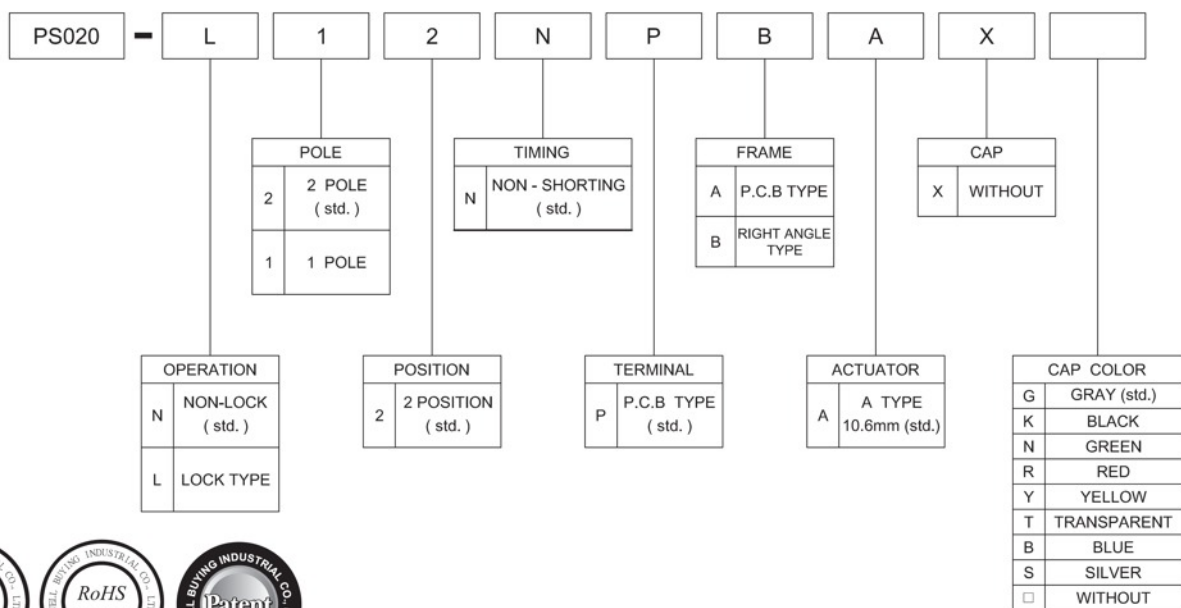
Application -

consumer products
computer products
instrumentation
communication equipments

► SPECIFICATIONS

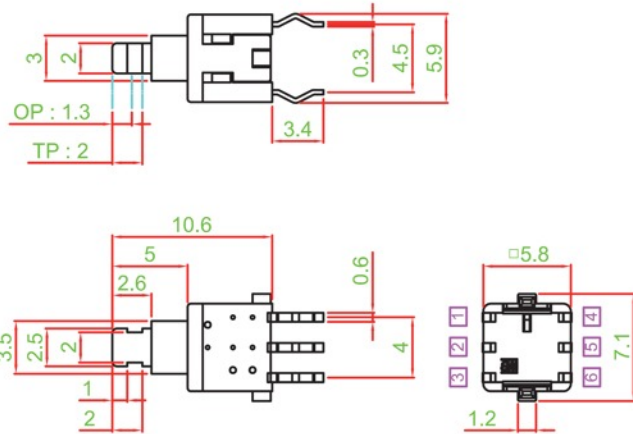
SWITCH SPECIFICATIONS	
POLE - POSITION	SPDT , DPDT
CONTACT RATING	12 V DC , 50 mA
CONTACT RESISTANCE	100 mΩ MAX. 1.5 V DC ; 100 mA , by Method of Voltage DROP
INSULATION RESISTANCE	100 MΩ MIN. 500 V DC for 1 minute
DIELECTRIC STRENGTH	Breakdown is not Allowable ; 500 V AC for 1 Minute
OPERATING FORCE	250 ± 50 gf
OPERATING LIFE	50,000 cycles
OPERATING TEMPERATURE RANGE	-20°C ~ 70°C
TOTAL TRAVEL / OPERATING TRAVEL	2 ± 0.3 mm / 1.3 ± 0.3 mm

► HOW TO ORDER

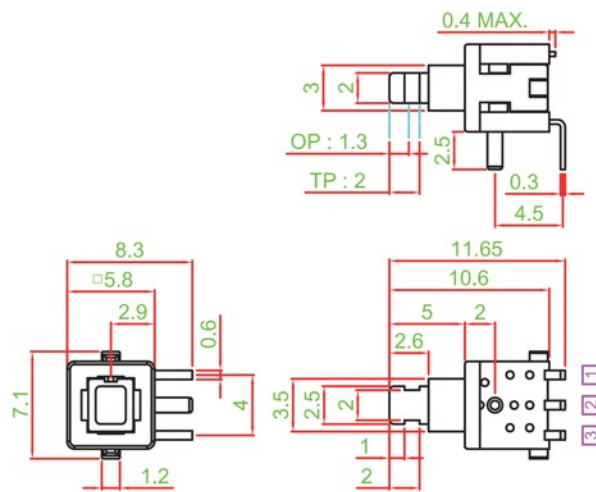


▶ DIMENSION

PS020-L22NPAAX

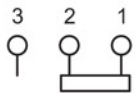


PS020-L12NPBAX

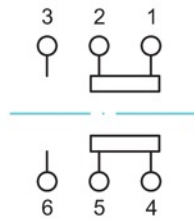


▶ SCHEMATIC

SINGLE
POLE

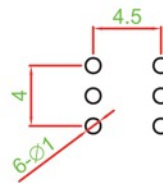


DOUBLE
POLE

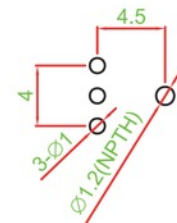


▶ P.C.B LAYOUT

A TYPE



B TYPE



▶ MATERIAL

- ACTUATOR : PA + GF
- FRAME : PA + GF
- TERMINAL : BRONZE SILVER PLATING
- SPRING : STAINLESS STEEL